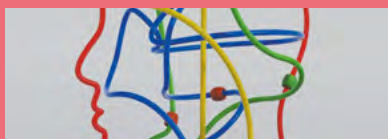


EDHECVOX

Powerful Thinking for Promising Tomorrows

JUNE 2025 ♦ no.16

ENGLISH VERSION



AI GENERATIONS: WHAT IF SCHOOLS SET THE RULES?

Shaping a Generation of Critical Thinkers



MICHELLE SISTO: "QUICKLY" AND 'EFFECTIVELY' ARE NOT THE SAME THING."

Interview with the Director of EDHEC's AI Centre



AI IN THE WORKPLACE: TOP-DOWN, BOTTOM-UP... OR BOTH?

Conducting Change Management During AI Transition



AI'm Everywhere

Reflections on a Transformative Shockwave



**PAOLO
PAPOTTI,**
Associate
Professor at
EURECOM

EURECOM: Teaching AI Without Disconnecting Critical Thinking

With generative AI on the rise, engineering school EURECOM, based in Sophia Antipolis, has been actively exploring its educational applications for several years. For Paolo Papotti, professor of data science, higher education has a responsibility to strengthen students' critical thinking — especially in a field where *“AI proves particularly effective.”*

That realisation led Professors Troncy and Michiardi, heads of the Data Science department, along with Papotti, to develop their own pedagogical assistant: Euler. To ensure academic rigour, the assistant is powered exclusively by course content and built on *“a Socratic approach,”* Papotti explains. *“The model doesn't provide direct answers but instead invites students to ask the right questions. If it is needed to solve a problem, it might prompt a review of linear algebra concepts, for instance,”* he adds.

This kind of approach is vital in engineering schools, where students are well equipped not only to create technology but also to fight misinformation. *“With their scientific training, our students are taught the principles of the scientific method — from hypothesis-building to peer review. We have a duty to help them apply these same principles to AI and to understand its ethical implications through an interdisciplinary lens,”* says Papotti. In this context, cross-institutional collaboration is key, as demonstrated by the growing partnership between EURECOM and EDHEC.

Since 2021, the two schools have aligned on tech, AI and business research, and they have also merged their entrepreneurial ecosystems: TechForward in Sophia Antipolis (EURECOM) and EDHEC's incubators across its campuses in Lille, Nice and Paris (Station F). Two dual-degree programmes have also emerged from the collaboration: the MSc in Network and Telecommunications (the Internet of Things track) and the MSc in Computer Science (the Data Science track). ♦